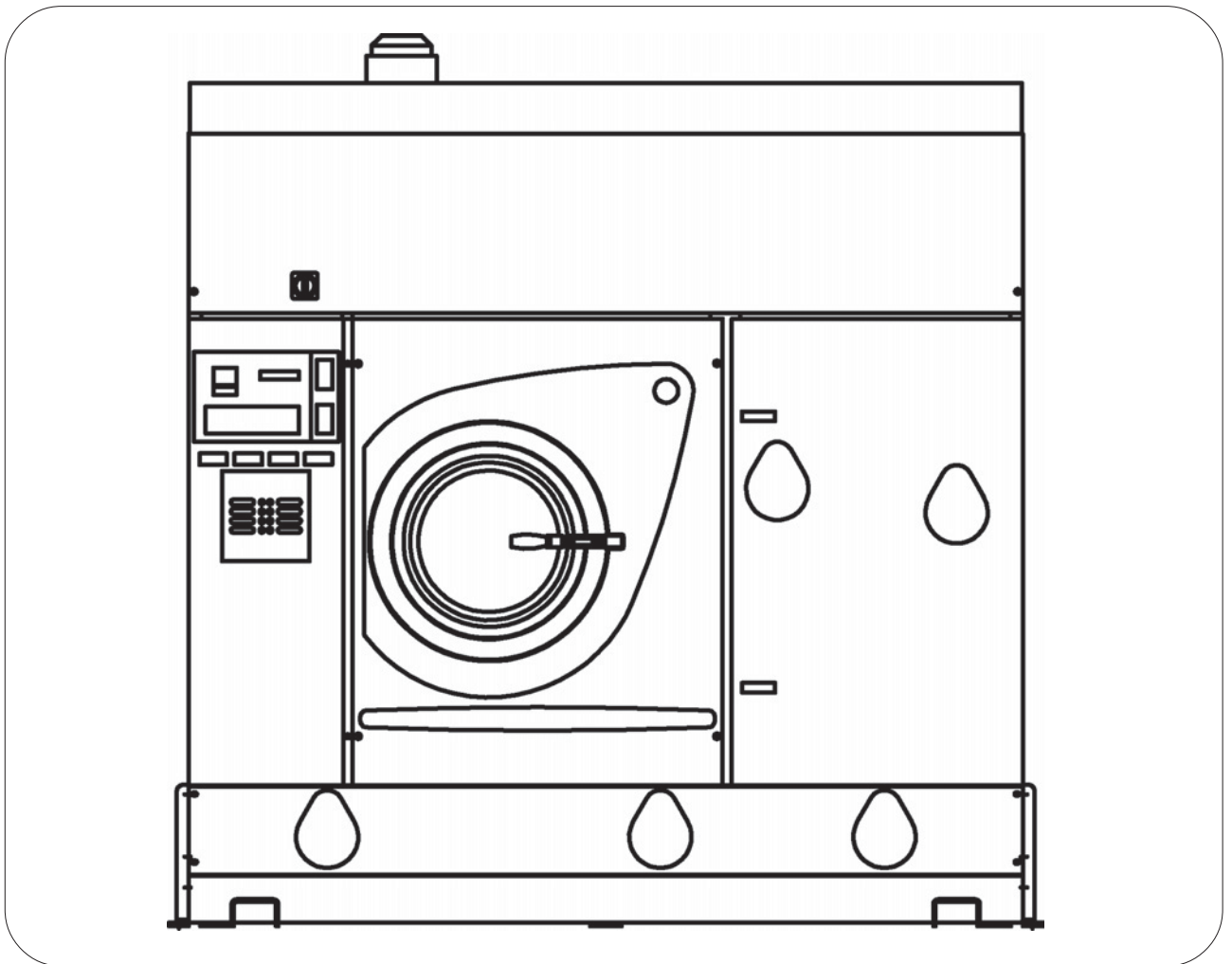




FIRBIMATIC

DRY CLEANING DIVISION

TECHNICAL INFORMATION



L2120

WORKING MACHINE WITH SOLVENT:	HYDROCARBON	
MACHINE CAPACITY (RATIO 1:20)	Lbs	45

BASKET

Diameter	inches	39.4
Depth	inches	20
Volume	gal	106
Wash speed	rpm	12 ÷ 50
Extract speed	rpm	300 ÷ 540
Door opening	inches	20

SOLVENT TANKS

Useful volume tank 1	gal	42
Useful volume tank 2	gal	42
Useful volume tank 3	gal	53
FLOOR SAFETY TANK CAPACITY	gal	113.5

DESTILLATOR

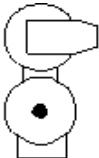

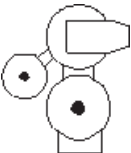
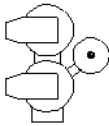
Useful volume at half inspection	gal	68
Total volume	gal	86
Boiler water capacity	gal	2.6

ELECTRIC POWER

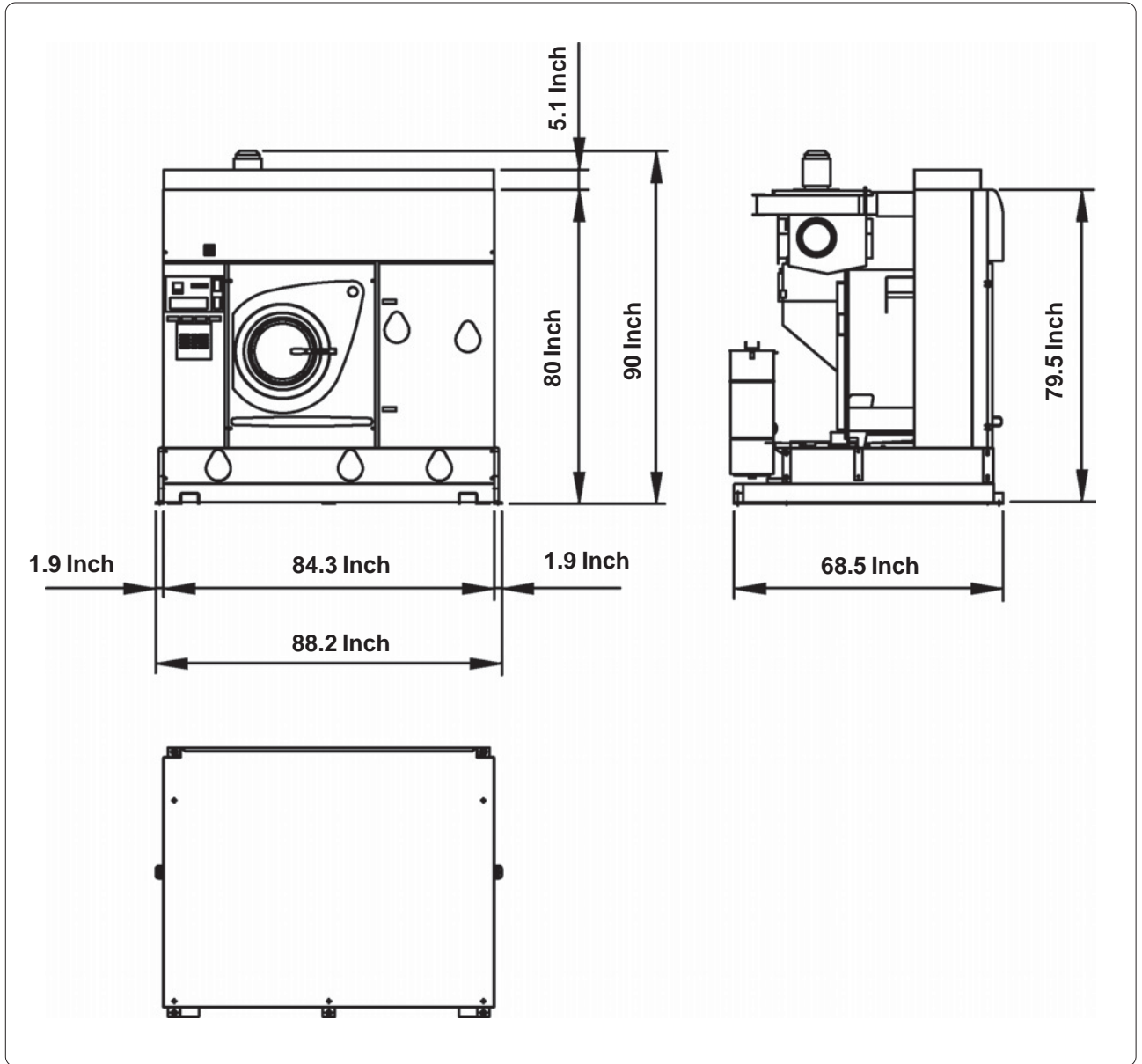
(220 V - 60 Hz)

Wash motor - Extract motor	Hp	7.5	Kw	5.5
Solvent pump motor	Hp	1	Kw	0.75
Fan motor	Hp	3	Kw	2.25
Refrigerator compressor MT81 (R22)	Hp	6.5	Kw	4.85
Nylon filter motor	Hp	0.75	Kw	0.55
Vacuum pump motor	Hp	3	Kw	2.25
Still electric elements*	Hp		Kw	13.5
Heater electric elements	Hp		Kw	6 x 2.5 = 15
Air motor compressor	Hp	-	Kw	-

NOTE: Acoustic emission level of the machine is lower than 70 dB (A)

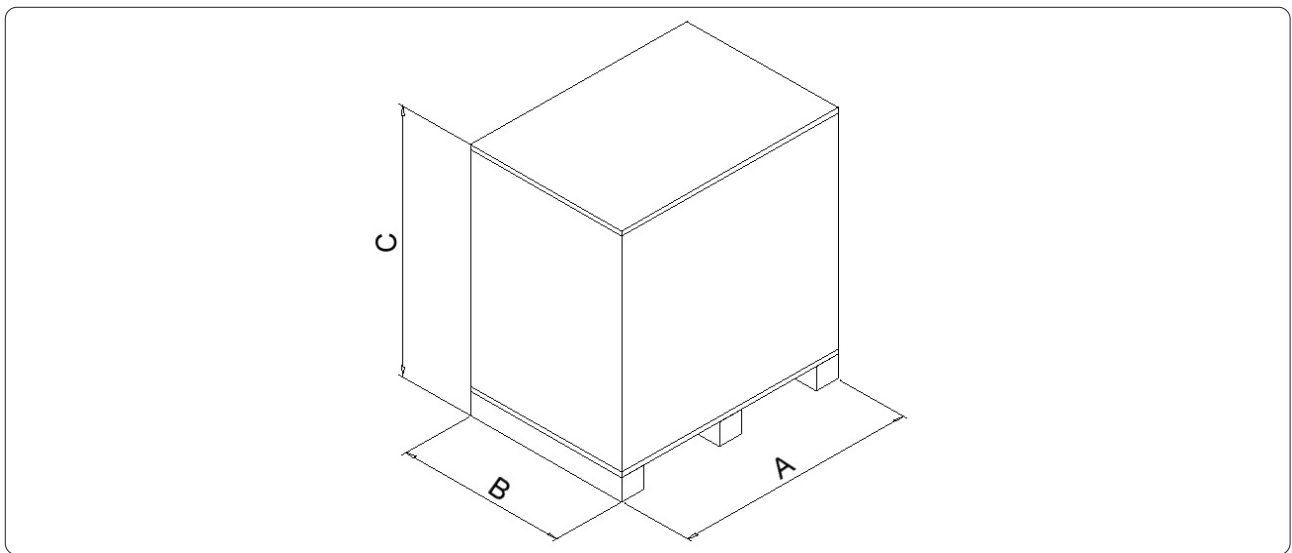
FILTRATION AVAILABLE IN THIS MODEL			
Version	ONE NYLON FILTER AND ONE LARGE CARTRIDGE - KR		
	Volume nylon filter housing	gal	20
	Nylon filter area	ft²	60
	Filter disks	nr	39
	Volume large cartridge housing - KR	gal	22.5
	Area large cartridge	ft²	28 x 3 = 84
	Cartridges quantity	nr	3
Version	ONE NYLON FILTER AND ONE DECOLORATING FILTER		
	Volume nylon filter housing	gal	20
	Nylon filter area	ft²	60
	Filter disks	nr	39
	Decolorating housing volume	gal	6.6
	Decolorating cartridges	nr	2
	Decolorating cabon quantity	Lbs	8.8
Version	ONE NYLON ONE CARTRIDGE -KR ONE DECOLORATING		
	Volume nylon filter	gal	20
	Nylon filter area	ft²	60
	Filter disks	nr	39
	Volume large cartridge housing - KR	gal	22.5
	Area large cartridge	ft²	28 x 3 = 84
	Cartridges quantity	nr	3
	Volume decolorating housing	gal	6.6
	Tubes	nr	1
	Cartridge quantity	nr	2
	Decolorating carbon quantity	Lbs	8.8
Version	TWO NYLON FILTER AND ONE DECOLORATING FILTER		
	Volume nylon filter housing	gal	20 x 2 = 40
	Nylon filter area	ft²	60 x 2 = 120
	Filter disks	nr	39 x 2 = 78
	Volume decolorating housing	gal	6.6
	Tubes	nr	1
	Cartridge quantity	nr	2
	Decolorating carbon quantity	Lbs	8.8

DIMENSIONS AND WEIGHTS



CHARGES		
Empty machine weight	Lbs	4630
Machine weight with solvent	Lbs	5865
Static charge on the floor with solvent	Lbs/ft ²	146
Dynamic charge on the floor (+10%)	Lbs/ft ²	221

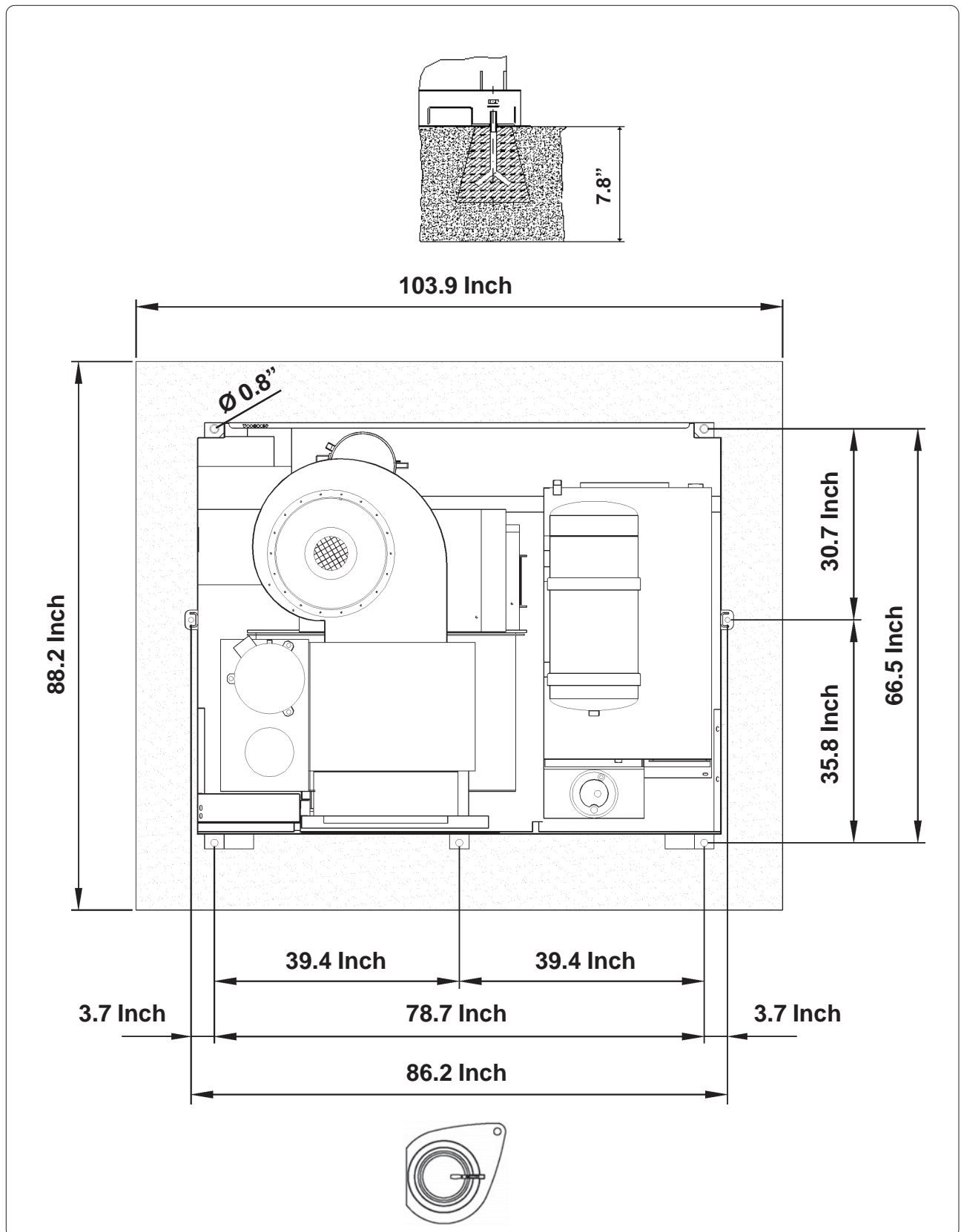
PACKAGED MACHINE DIMENSIONS AND WEIGHTS



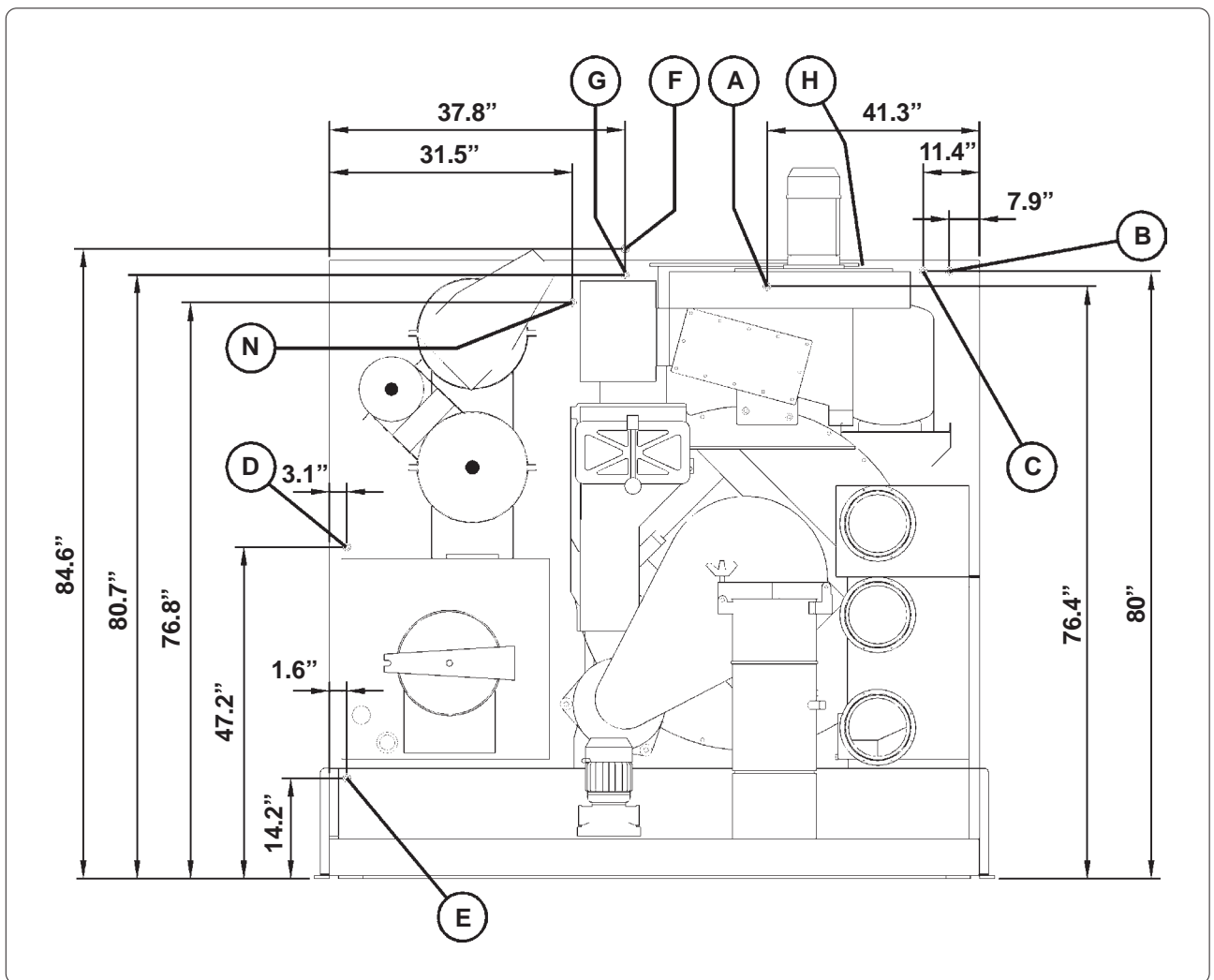
PACKAGED MACHINE DIMENSIONS				
Machine type		Carton	Wooden cage	Wooden case
L2120	A	inches 88.2	inches 89.8	
	B	inches 78.3	inches 74.8	
	C	inches 96.1	inches 96.1	

PACKAGED MACHINE WEIGHTS				
Machine type		Carton	Wooden cage	Wooden case
L2120		Lbs 4872	Lbs 4960	

FIXING POINTS



CONNECTIONS



A	Compressed air inlet	Ø 6 mm
B	Water inlet	Ø 1"
C	Water outlet	Ø 1"
D	Steam still inlet	Ø 1/2"
E	Condensate still outlet	Ø 1/2"
F	Steam heater inlet	Ø 1/2"
G	Condensate heater outlet	Ø 1/2"
H	Electric connection	
N	Nitrogen feeding connection (N ₂)	

SOLVENT TYPE	HYDROCARBON			
NECESSARY QUANTITY OF SOLVENT TO FILL THE MACHINE				
Machine Version - 1 Nylon F.+ 1 KR F.	gal	188	Lbs	1213
Machine Version - 1 Nylon F.+ 1 Deco F.	gal	172	Lbs	1102
Machine Version - 1 Nylon F.+ 1 KR F.+ 1 Deco F.	gal	194	Lbs	1246
Machine Version - 2 Nylon F.+ 1 Deco F.	gal	192	Lbs	1235

INFORMATION FOR THE ELECTRICAL CONNECTIONS (220 V - 60 Hz)				
ELECTRIC Version	Kw	-	Amp	-
STEAM Version	Kw	16	Amp	67

GENERAL INFORMATION		
Required water capacity	gal/min	3
Required water pressure	psi	29 ÷ 44
Required water temperature	°F	65° ÷ 70°
Required air pressure	psi	100 ÷ 115
Required steam pressure (Steam Version)	psi	55 ÷ 70
Required steam availability (Steam Version)	Lbs/h	132

All technical data are subject to change without notice.