



ANOTHER
BREAKTHROUGH
FROM A WORLD LEADER
IN STATE OF THE ART
ENGINEERING
AND TECHNOLOGY

THE NEXT
GENERATION
OF PERC
MACHINES



Firbimatic spa Italy
Via Turati 16
40010 SALA BOLOGNESE (BO) ITALY
Tel. +39 051 6814189-6814451
Fax +39 051 6814556
e-mail: com.export@firbimatic.it
<http://www.firbimatic.it>

ECO DRY of AMERICA
Division of Firbimatic
11314 East Main Street
Huntley, IL 60142
Tele: 847-515-2345
Fax: 847-515-2444
e-mail: EcoDryofAmerica@aol.com

Authorized Distributor



Vortex 40

Firbimatic is pleased to introduce the new Vortex™ Series the next generation of perc cleaning machines! Firbimatic always on the cutting edge of development has designed and engineered another innovative breakthrough in state of the art perchloroethylene dry cleaning machine technology. The new Vortex™ series machines are available in models ranging from 40lbs. to 95lbs. loading capacity.



Petite 40 Petite 50

Vortex Vapor Induction Drying System

Firbimatic is pleased to introduce the revolutionary Vortex vapor induction drying technology, which greatly reduces drying times for perchloroethylene solvent. This is accomplished by a unique drying chamber design using special placement of the drying fan, condensing and heat pump coils. The Vortex technology greatly increases the induction flow of both air and solvent vapor into the recovery chamber resulting in shorter overall cycle times from start to finish. Increased production in less time means more garments cleaned daily and more money in your pocket. The unique drying chamber allows easy access for maintenance of both condensing and heat pump coils. Each coil is equipped with quick disconnects with auto lockouts which prevent freon gas from escaping the system.



Vortex 50
Vortex 60



Dosing Pump

Standard on all models is our special automated chemical injection pump. For an exact addition of chemicals, the pump can be programmed in the computer or operated manually.

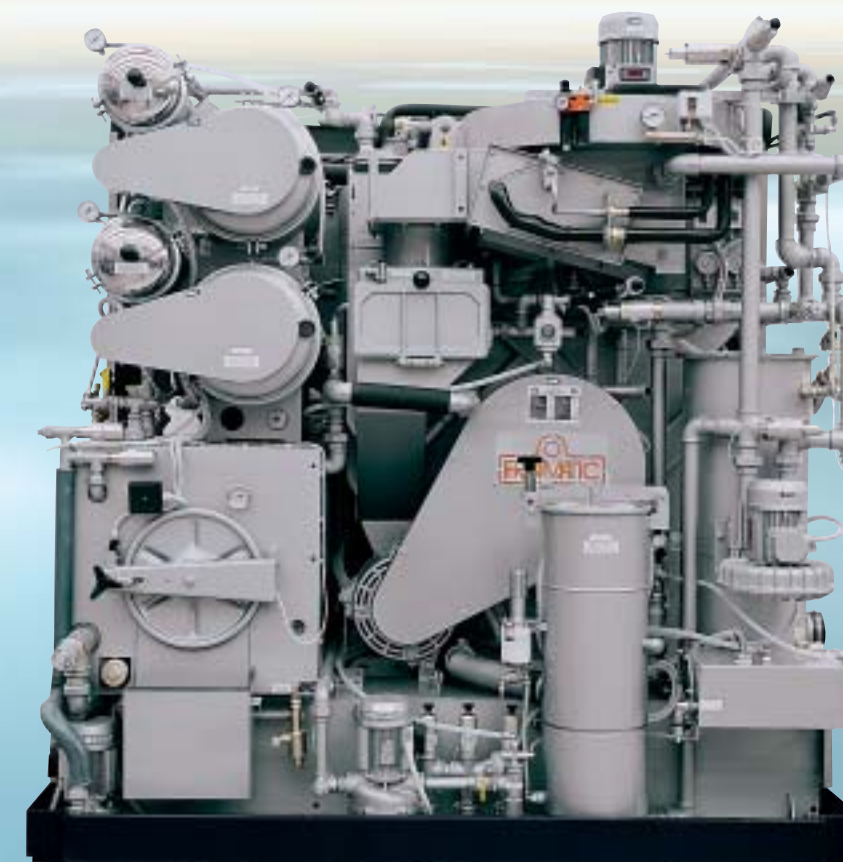
Drying Control

Automatic "Drying Control" delays the drying cycle until the drying control is satisfied, assuring the operator that each load is dry.



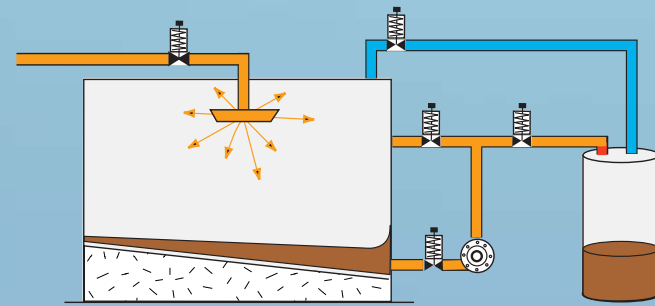
Secure-Lock™ Door Locking System

With safety in mind Firbimatic gives you peace of mind with Secure-Lock™ door locking system. The Smart™ microprocessor works in conjunction with the door locking system to assure the operator that every door on the Vortex™ Series is closed and secure before allowing the machine to start the cycle.



Vortex 80

The models Vortex 80 (80 Lbs) and Vortex 95 (95 Lbs) are the optimum solution for industrial dry-cleaning needs or whenever high production rates are required. An in depth study has been performed, in collaboration with Research Institutes and Dry-cleaners, with the purpose of designing all the systems to guarantee the maximum exploitation of the actual technology.



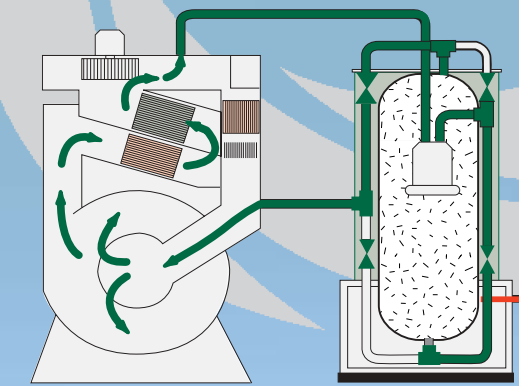
Automatic Still Sludge Pump System

Thanks to Firbimatic's "Clean Still"... cleaning the still is hands free, to an authorized sealed containment vessel for disposal. Removal complies with all current environmental legislation.

Vortex 95

Coalperc Carbon Adsorption System

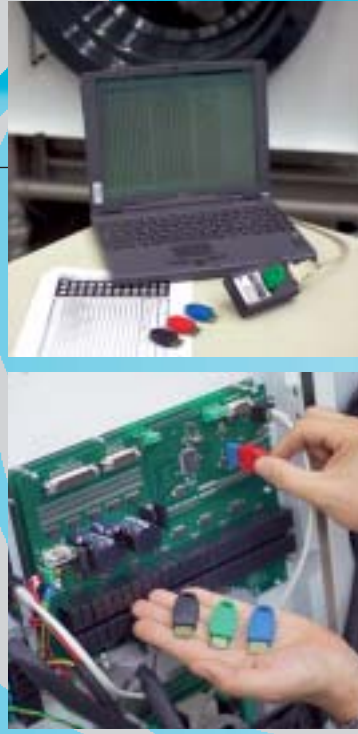
Below 290 PPM at the end of every cycle is assured thanks to Firbimatic's Coalperc carbon adsorption system. With 70 or 140 lb. of activated carbon regeneration of the Coalperc's carbon bed may only be necessary once a week. Thanks to an innovative and revolutionary design the Coalperc has now been integrated directly in the machine which produces significant space saving.



Cleaning module

Tandem

The TANDEM models represent the highest degree of manufacturing and operating versatility in order to fulfil any requirement in terms of running times and production volumes. TANDEM version combines a regular "Vortex" model to a cleaning module "Vortex GL" or alternatively one still module with filters to one or more cleaning modules "Vortex GL".



Smart Microprocessor + Combi

Firbimatic has placed all this technology and performance at the touch of your finger tips with the Smart, microprocessor. Features of the Smart include simple touch and forget controls for fully automatic operation of cleaning, drying and distillation cycles. Pro-Logic™ maintenance program manager will monitor all machine functions and alert the operator to any required maintenance such as cleaning of lint screens, button trap, or ecological spin filter. All cleaning cycles and maintenance features can be custom programmed to your requirements and stored on a Pro-Logic™ memory key for instant back up should you ever need to change or replace your custom programming. Furthermore, the new intelligent Combi Computer allows you to set a constant drying or solvent temperature, or vary from step to step with digital accuracy. In addition, the new timer function offers the maximum in washing flexibility, use preset wash cycles or vary every load. Cooling down solvent prior to filling the drum or cooling down garments is no problem with the Temp Pause feature. All in all, Combi is the most user-friendly computer available on the market.





Vortex
Classic

models available



Standard Features on the Vortex™ Plus Series Machines

- All High Grade Stainless Steel Construction
- Two Speed Extract Motors on Vortex 50 and up
- Oversized Button Trap
- Glass Inspection Port In Recovery Chamber
- Automatic Soap Injection Pump
- Automatic Still Overfill Protection
- Automatic Still Sludge Pumping System (option on 3rd generation)
- Double Lint Filters
- Pneumatic Air Value Exhaust System
- Thermostat Temperature Controlled Distillation
- Safe 24 Volt Control Circuits
- Adjustable Electronic Drying Control
- Easy Access Panels From Front Of Machine
- Safety Containment Tray

TECHNICAL DATA

Models		PETITE 40 S2018	PETITE 50 S2020	VORTEX 40 2018	VORTEX 50 2020	VORTEX 60 2025	VORTEX 80 2032	VORTEX 95 2040
DRUM								
Drum Diameter	In	34,5	39,4	35,4	39,4	39,4	47,3	47,3
Drum Depth	In	21	20	21	20	25,2	22,4	28
Drum Volume	Cu Ft	12	14	12	14	17,6	23	28,5
Drum Loading Ratio (Cu Ft)	Lbs	3,25	3,25	3,25	3,25	3,25	3,25	3,25
Drum Cleaning Speed	Rpm	40	40	40	40	40	40	40
Drum Extraction Speed	Rpm	400	400	400	400	400	400	400
TANKS								
1° Tank Volume	gal	25	29	29	42	42	63,4	63,4
2° Tank Volume	gal	40	43,6	29	42	42	63,4	63,4
3° Tank Volume	gal	/	/	53	53	53	87,2	87,2
DISTILLATION								
Still Volume	Gal	42	45	50	68	68	95	95
Distillation Rate (Steam)	Gal/Hr	45	45	60	80	80	110	110
ELECTRICAL POWER								
Electrical Power (Electrical)	Kw	20	23	20	23	28	/	/
Electrical Power (Steam)	Kw	7	9	7	9	9	10	10
FILTER								
Ecological Disc Filters Volume	Gal	15	15	30	42	42	42	42
Ecological Disc Filters Surface	Sq In	11,7	11,7	23,4	35,1	35,1	35,1	35,1
Ecological Disc Filters Number	Num	25	25	50	76	76	76	76
WEIGHT								
Shipping Weight	Lbs.	3630	3750	4060	4850	5140	6020	6260
Shipping Weight - Plus Model	Lbs.	3900	4012	4320	5115	5405	6285	6525
Weight with Solvent	Lbs.	4710	4955	5970	7250	7540	9440	9680
Weight with Solvent - Plus Model	Lbs.	4970	5220	6240	7513	7803	9710	9950
DIMENSION								
Length Installed	Ins	53,2	55,2	82,7	84,25	84,25	93	93
Depth Installed	Ins	86,7	87	61,1	68,9	68,9	79,7	79,7
Height Installed	Ins	91,4	90	87,4	90	90	102,7	102,7

All descriptions and specifications are subject to change without notice.