

TECHNICAL DATA	AM918		40SM		AM925		60SM	
	Unit	Value	Unit	Value	Unit	Value	Unit	Value
Loading Capacity	Kg	18	Lbs	40	Kg	25	Lbs	60
Loading Door Diameter	mm	500	Inc	19.7	mm	500	Inc	19.7
Basket Diameter	mm	900	Inc	35.5	mm	1000	Inc	39.4
Basket Depth	mm	535	Inc	21	mm	640	Inc	25.2
Volume	Lt	340	Cu.ft	12	Lt	500	Cu.ft	17.7
Wash	RPM	20/50	RPM	20/50	RPM	20/50	RPM	20/50
Extraction	RPM	350/800	RPM	350/800	RPM	350/760	RPM	350/760
Tank 1 Volume	Lt	115	UG	30	Lt	200	UG	53
Tank 2 Volume	Lt	125	UG	33	Lt	200	UG	53
Tank 3 Volume	Lt	247	UG	65	Lt	279	UG	74
Still Capacity	Lt	190	UG	50.2	Lt	260	UG	69
Nylon Filter Capacity	Lt	55	UG	14.5	Lt	75	UG	19.8
Cartridge Filter Capacity	Lt	55	UG	14.5	Lt	75	UG	19.8
Fan Motor	HP	3	HP	3	HP	3	HP	3
Solvent Pump	HP	1	HP	1	HP	1.5	HP	1.5
Vacuum Pump	HP	3	HP	3	HP	3	HP	3
Fridge Compressor	HP	5	HP	5	HP	6.5	HP	6.5
Air Compressor	HP	0.5	HP	0.5	HP	0.5	HP	0.5
Central Motor	HP	4.5	HP	4.5	HP	10	HP	10
Max Installed Power (Steam version)	50 Amps				60 Amps			
Heater Heating Elements	kW	12	kW		kW	15	kW	15
Still Heating Elements	kW	12	kW		kW	12	kW	12
Max Installed Power (Electric Version)	110 Amps				120 Amps			
Compressed Air Pressure	atm	6/7	psi	88/103	atm	6/7	psi	88/103
Steam Pressure	atm	3.5/4.5	psi	52/66	atm	3.5/4.5	psi	52/66
Max Width	mm	2074	Inc	81.6	mm	2324	Inc	91.5
Depth	mm	1981	Inc	77.9	mm	2181	Inc	85.8
Height	mm	2290	Inc	90.1	mm	2390	Inc	94
Wheigh without Solvent with Safety Tray	kg	2460	Lbs	5424	kg	3500	Lbs	7716
Wheigh with Solvent with Safety Tray	kg	3020	Lbs	6658	kg	4150	Lbs	9150

All descriptions and specifications are subject to change without notice.



Firbimatic spa Italy

Via Turati 16 - 40010 SALA BOLOGNESE (BO) - ITALY
 Tel. +39 051 6814189-6814451 - Fax +39 051 6814556
 e-mail: com.export@firbimatic.it
 http://www.firbimatic.it

ECO DRY of AMERICA

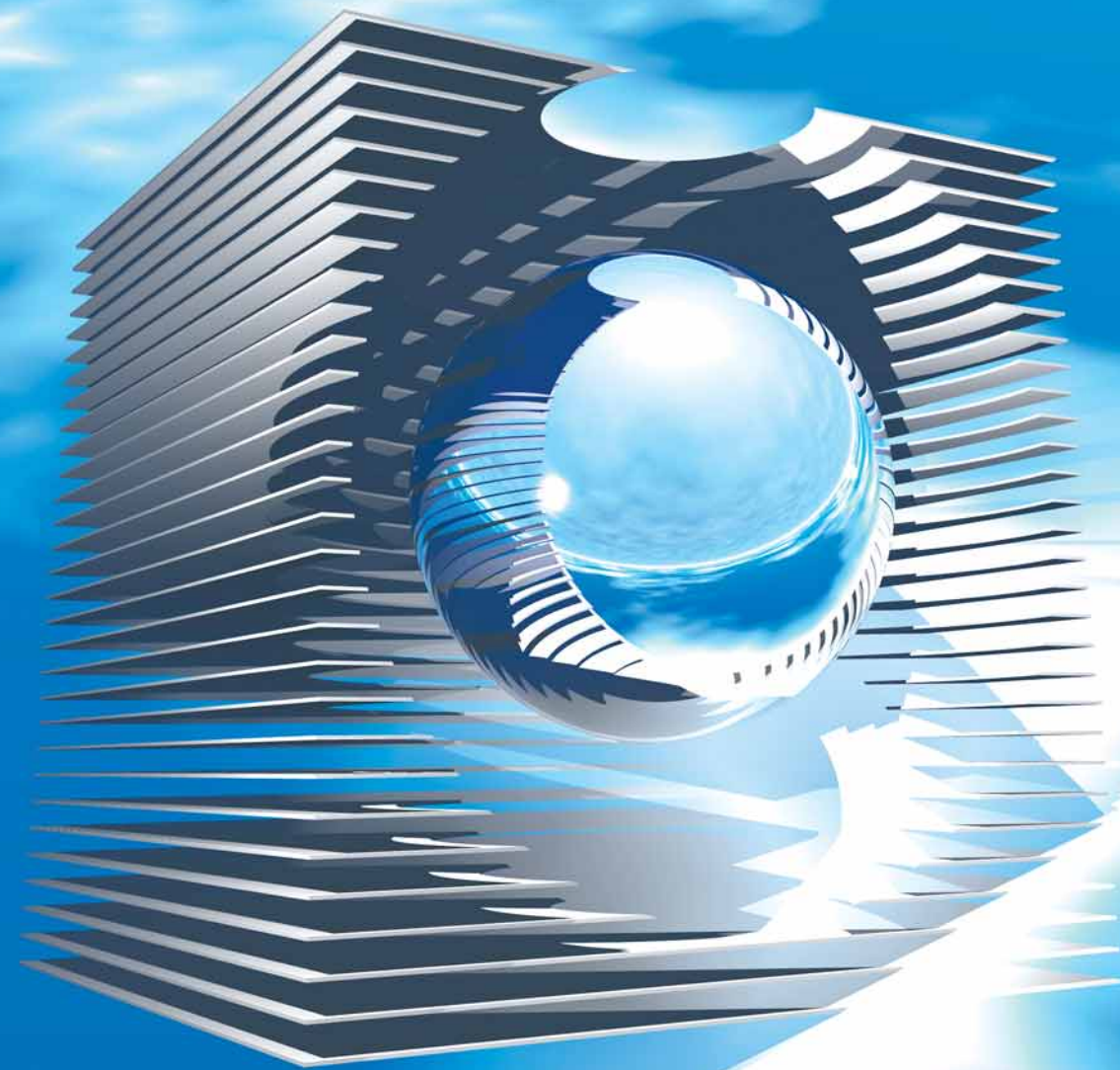
Division of Firbimatic
 11314 East Main Street - Huntley, IL 60142
 Tele: 847-515-2345 - Fax: 847-515-2444
 e-mail: EcoDryofAmerica@aol.com

pi@grafica bogno tel.051-532211 - Email: info@pi@grafica.it



ANOTHER
 BREAKTHROUGH
 FROM A WORLD LEADER
 IN STATE OF THE ART
 ENGINEERING
 AND TECHNOLOGY

THE NEXT
 GENERATION
 OF MACHINES
 USING SOFT
 MOUNT BASKET
 TECHNOLOGY



La serie ECOPRO AM rappresenta certamente un'evoluzione innovativa nello stato dell'arte delle macchine ad idrocarburi. Si tratta di macchine a cesto sospeso d'elevata velocità di centrifuga (800 giri al min.) a cui corrisponde un fattore "G" di oltre 300, che permette di ridurre i tempi di asciugamento a valori uguali o anche inferiori a quelli di una macchina a percloroetilene. Con la serie AM sono stati eliminati al tempo stesso tutti quegli aspetti negativi che, fino ad oggi, ne hanno limitato lo sviluppo ed in particolare la loro bassa produttività.

Le ECOPRO AM Reihe stellt sicherlich die innovativste Weiterentwicklung im Bereich der KWL-Maschinen dar. Es handelt sich um Maschinen mit abgefendeter Trommel und hoher Schleudergeschwindigkeit (800 Umdrehungen/Minute), die einem "G"-Faktor von über 300 entspricht. Dadurch werden die Trocknungszeiten merklich vermindert und liegen somit bei oder auch unter den Werten von Per-Maschinen. Mit der Serie AM werden gleichzeitig alle negativen Aspekte der KWL-Maschinen beseitigt, insbesondere ihre geringe Produktivität, durch die der Einsatz und die Entwicklung dieses Lösemittels bis heute immer beschränkt wurde.

The ECOPRO AM series represents a new development in the progress of machines that working with hydrocarbons and alternative solvents.

These machines are provided with a soft mounted drum having a high centrifugal speed (800 rpm.) corresponding to a "G" factor of over 300, that enables the reduction of the drying times to values equal to or even less than those per machines. Simultaneously, with the AM series, all those negative aspects which restricted development of hydrocarbon machines, such as their low productivity, have been eliminated.

La série ECOPRO AM représente certainement une nouvelle étape dans l'art de fabriquer des machines à panier suspendu à grande vitesse d'essorage (800 tours par minute) qui correspondent à un facteur "G" de plus de 300, qui permet de réduire les temps de séchage à des temps comparables ou inférieurs à ceux d'une machine au perchloroéthylène.

Avec la séries AM, on élimine tous les aspects négatifs des solvants hydrocarbures qui limitaient leur développement et en particulier leur faible taux de productivité.



EcoPro

